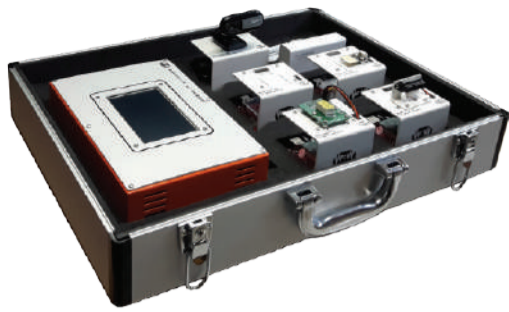


Internet of Things(IoT) Trainer 「WOW-4017」



[Aluminum Bag Type]



[Profile Frame Type]



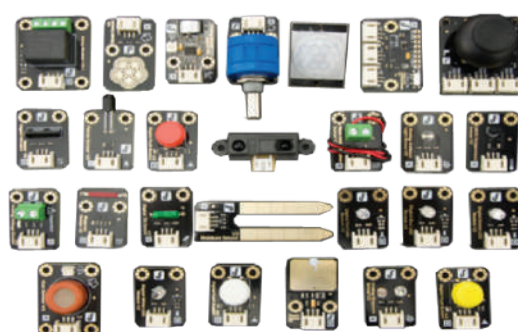
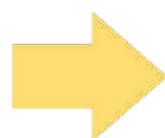
Features

- Understanding IoT's flow of a whole. (IoT Device - IoT Platform - IoT Service)
- Individual experiment local IoT Platform and Cloud IoT Platform.
- IoT device design practice with Wi-Fi/BLE using Arduino firmware.
- Providing various module such as sensor, actuator and display.
- Built in battery and easy moving.
- In local network, it possible to use local IoT Platform and Cloud IoT Platform together.

Specification

- Wi-Fi Device
 - ATmega328, Battery / Wi-Fi Module
- Embedded Device
 - Quad-core ARM Cortex-A7
 - Wi-Fi, USB Camera
- USB Charger
 - 4 Ports
- Sensor & Actuator Module

• Relay	• RED LED	• White LED	• Green LED	• Blue LED
• Grayscale	• Temperature	• Light Sensor	• Vibration	• Tilt
• Push Button	• Touch	• Magnetic	• Sound	• Carbon Monoxide
• Voltage Divider	• Rotation	• Servo Motor	• Flame	• Accelerometer
• Infrared motion	• Distance	• Moisture	• FND	
- BLE Device
 - ATmega328, Battery / BLE Module
- IoT Gateway
 - Quad-core ARM Cortex-A7
 - Wi-Fi, BLE, Gateway Program



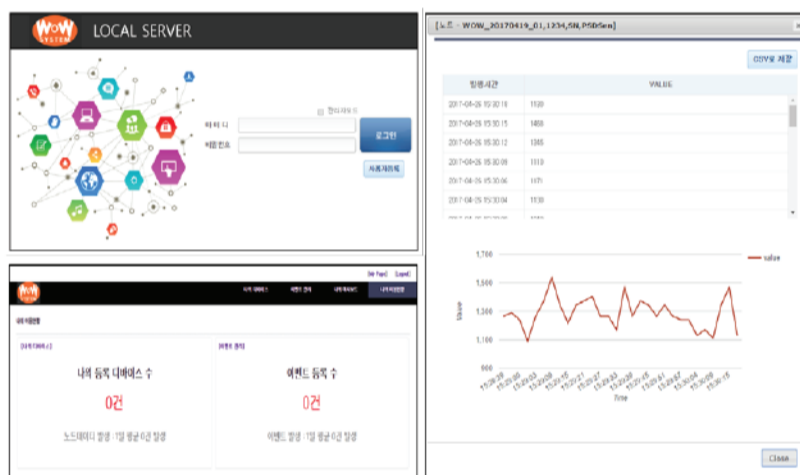
Sensor & Actuator Module

Internet of Things(IoT) Trainer 「WOW-4017」

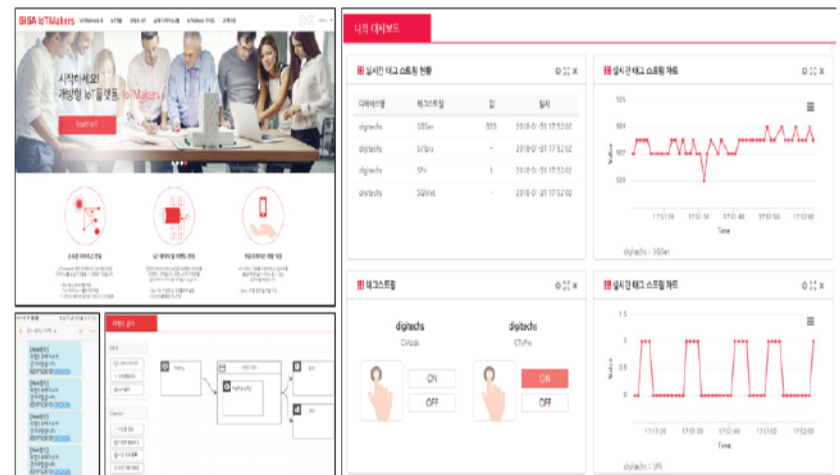
- Development Tool
 - Arduino IDE(Arduino Program)



- Local IoT Platform
 - Local Platform
 - * In case that an external network can not be used.
 - Device Management
 - Data log - Low Data / Chart
 - Event Setting
 - Dashboard
 - Device State / Line Chart / Gauge Chart
 - Saving Data File CSV



- Cloud IoT Platform (KT IoTMakers)
 - External Network
 - Device Management
 - Data log - Low Data / Chart
 - Event Setting
 - Possible to use Mobile Phone SMS Service
 - Dashboard
 - Device State / Real Time Data Table / Chart
 - Device Monitoring and Control using Android App



Training Contents

- Wi-Fi Direct
 - Developing firmware for a push button monitoring service.
 - Developing firmware for a rotation sensor monitoring service.
 - Developing a LED module control service firmware.
 - Developing a FND module control service firmware.
 - Developing a device interworking event firmware.
- Gateway
 - Developing firmware for a rotation sensor monitoring service.
 - Developing a LM35 sensor monitoring service firmware.
 - Developing a servo module control service firmware.
 - Developing a LED module control service firmware.
 - Developing a FND module control service firmware
 - Developing a device interworking event firmware.